

**Ft. Patrick Henry Reservoir**  
**Annual Report 2009**

Prepared By:

John Hammonds  
and  
Douglas C. Peterson

Tennessee Wildlife Resources Agency  
Region IV  
3030 Wildlife Way  
Morristown, TN 37814

All activities covered in this report were conducted under the following TWRA cost centers: 4311, 4312, and 4313. Development of this report was financed in part by funds from Federal Aid in Fish and Wildlife Restoration (Public Law 91-503) as documented in Federal Aid Project FW-6.

This program receives Federal Aid in Fish and Wildlife Restoration. Under Title VI of the Civil Rights Act of 1964 and Section 504 of the Rehabilitation Act of 1973, the United States Department of the Interior prohibits discrimination on the basis of race, color, national origin, or disability. If you believe you have been discriminated against in any program, activity, or facility as described above, or if you desire further information, please write to:

Office of Equal Opportunity  
United States Department of the Interior  
Washington, D.C. 20240

## Table of contents

	Page
<b>Reservoir Characteristics and Information</b> .....	3
<b>Habitat</b> .....	3
<b>Species Summaries</b> .....	4-7
<b>Tables</b>	
1. Fish stocked in Ft. Patrick Henry Reservoir .....	9
2. Number of species collected by electrofishing .....	9
3. Black bass cpue and RSD by category .....	1
4. Largemouth bass mean relative weights (Wr).....	11
5. Smallmouth bass mean relative weights (Wr).....	11
<b>Figures</b>	
1. Sites sampled on Ft Patrick Henry Reservoir in 2008.....	13
2. Largemouth bass length frequency by percent .....	14
3. Largemouth bass mean relative weights (Wr).....	14
4. Largemouth bass traditional PSD and RSD -15 values .....	15
5. Smallmouth bass length frequency by percent .....	15
6. Smallmouth bass mean relative weights (Wr).....	16
7. Smallmouth bass traditional PSD and RSD -14 values.....	16
<b>Appendix A – Reservoir Elevations</b>	
Table A1. Daily reservoir elevation data .....	18
Figure A1. Daily reservoir elevation data with guide curve .....	21

**Ft. Patrick Henry Reservoir**

**Description**

---

<b>Surface Area:</b> 872 acres	<b>Shoreline Distance:</b> 127 miles
<b>Counties:</b> Sullivan	<b>Drainage Area:</b> 1903 square miles
<b>Full Pool Elevation:</b> 1263 feet above mean sea level	<b>Mean Annual Fluctuation:</b> 5 feet
<b>Maximum Depth:</b> 76 feet	<b>Thermocline Depth:</b> 9 feet
<b>Mean Chlorophyll (Forebay):</b> 11.1 parts per million	<b>Shoreline Development:</b> 34%
<b>Trophic Status (Forebay):</b> Mesotrophic	<b>Trophic Index, Carlson (1977):</b> 54.2
<b>Hydraulic Retention Time:</b> 38 days	<b>Reservoir Age:</b> 56 years (dam completed 1953)
<b>Total Fishing Effort:</b> N/A	<b>Total Value by Anglers:</b> N/A

---



---

**Habitat Enhancement and Monitoring**

---

Location	New Sites			Renovated Sites			Expanded Sites		
	Number	Units	Acres	Number	Units	Acres	Number	Units	Acres
			None		in				2009

---

## Largemouth Bass

	2000	2001	2002	2003	2004	2005	2006	2007	2008	2009	Mean
<b>Recruitment</b> (electrofishing data - CPUE = # fish/hour)											
Age-1 CPUE	N/A	N/A	N/A	N/A	N/A	N/A	N/A	N/A	N/A	N/A	N/A
Substock CPUE	28.4	23.8			6.4	7.9	16.8	3.2	12.8	13.6	14.1
<b>Density</b> (electrofishing data - CPUE = # fish/hour)											
PSD	42%	71%			93%	85%	79%	79%	76%	70%	74.4%
RSD - Preferred	32%	26%			54%	68%	60%	47%	40%	49%	47.0%
CPUE	80.0	85.2			59.7	39.6	55.2	33.6	52.8	78.4	60.6
CPUE ≥ Stock	51.6	61.4			53.4	31.7	38.4	30.4	40.0	64.8	46.5
<b>Growth</b> (electrofishing data)											
Mean TL at Age-1 (mm)	N/A	N/A	N/A	N/A	N/A	N/A	N/A	N/A	N/A	N/A	
Mean TL at Age-3 (mm)	N/A	N/A	N/A	N/A	N/A	N/A	N/A	N/A	N/A	N/A	
<b>Relative Weight</b> (electrofishing data)											
Stock - Quality	93.9	85.5			97.1	99.9	86.0	90.7	89.5	87.9	91.3
Quality - Preferred	96.2	90.7			100.3	88.7	82.8	94.2	93.9	98.0	93.1
Preferred - Memorable	95.9	94.4			98.0	95.9	94.9	96.8	100.8	98.5	96.9
Memorable - Trophy	109.6	99.4			none	106.5	102.4	none	117.8	94.2	105.0
Trophy	none	none			none	none	none	none	none	none	none
<b>Mortality</b> (electrofishing data)											
Total Mortality	N/A	N/A	N/A	N/A	N/A	N/A	N/A	N/A	N/A	N/A	

## Fishery Forecast

Largemouth bass catch rates for 2009 were above average for Patrick Henry, and the size structure also showed improvement of fish over 15-inches. We continue to see good size structure of largemouth bass in Patrick Henry, which reflects a quality fishery and consistent reproduction. Good recruitment was noted again in 2009 and this fishery should remain stable for 2010.

## Management Recommendations:

Maintain the current regulations. Attempt to collect age structure data in the future.

## Smallmouth Bass

	2000	2001	2002	2003	2004	2005	2006	2007	2008	2009	Mean
<b>Recruitment</b> (electrofishing data - CPUE = # fish/hour)											
Age-1 CPUE	N/A	N/A	N/A	N/A	N/A	N/A	N/A	N/A	N/A	N/A	N/A
Substock CPUE	14.5	10.9			4.8	2.4	11.2	8.0	11.2	5.6	8.6
<b>Density</b> (electrofishing data - CPUE = # fish/hour)											
PSD	56%	83%			60%	50%	58%	67%	52%	67%	61.6%
RSD - Preferred	16%	67%			36%	36%	42%	52%	24%	48%	40.1%
CPUE	33.4	22.8			22.3	19.8	26.4	29.6	37.6	22.4	26.8
CPUE ≥ Stock	20.8	11.9			17.5	17.4	15.2	21.6	26.4	16.8	18.5
CPUE ≥ MSL (18")*	N o M i n i m u m S i z e L i m i t								3.2	0.8	2.0
<b>Growth</b> (electrofishing data)											
Mean TL at Age-1 (mm)	N/A	N/A	N/A	N/A	N/A	N/A	N/A	N/A	N/A	N/A	N/A
Mean TL at Age-3 (mm)	N/A	N/A	N/A	N/A	N/A	N/A	N/A	N/A	N/A	N/A	N/A
<b>Relative Weight</b> (electrofishing data)											
Stock - Quality	88.2	79.0			90.1	90.3	83.0	93.2	84.8	81.7	86.3
Quality - Preferred	79.4	79.4			91.2	89.0	81.1	81.2	85.5	85.2	84.0
Preferred - Memorable	80.0	81.2			92.6	85.7	80.7	82.8	84.6	86.3	84.2
Memorable - Trophy	92.3	52.6			81.8	87.8	81.0	85.2	81.4	104.5	83.3
Trophy	none	none			none	none	none	none	none	none	none
<b>Mortality</b> (electrofishing data)											
Total Mortality	N/A	N/A	N/A	N/A	N/A	N/A	N/A	N/A	N/A	N/A	N/A

\* 18" MLL in effect in 2008

## Fishery Forecast

Ft. Patrick Henry smallmouth bass densities fell back down to a little below average in 2009. However, the percentage of preferred size fish (>15-inches) in the population increased in 2009. Hopefully, the increase in larger size smallmouth bass will continue in this reservoir and will lead to a higher quality smallmouth bass fishery, due to the 18-inch minimum size limit that went into effect March 1, 2009. Recruitment was again noted in 2009 which should help this fishery to remain stable.

## Management Recommendations:

Maintain the current regulations. Attempt to collect age structure data in the future.

## Spotted Bass

	2000	2001	2002	2003	2004	2005	2006	2007	2008	2009	Mean
<b>Recruitment</b> (electrofishing data - CPUE = # fish/hour)											
Age-1 CPUE	N/A	N/A	N/A	N/A	N/A	N/A	N/A	N/A	N/A	N/A	N/A
Substock CPUE	0.0	0.0	0.0	0.0	0.0	0.0	0.0	0.0	0.0	0.0	0.0
<b>Density</b> (electrofishing data - CPUE = # fish/hour)											
PSD	none	none	none	none	none	none	none	none	none	50%	50.0%
RSD - Preferred	none	none	none	none	none	none	none	none	none	0%	0.0%
CPUE	0.0	0.0	0.0	0.0	0.0	0.0	0.0	0.0	0.0	1.6	0.2
CPUE ≥ Stock	0.0	0.0	0.0	0.0	0.0	0.0	0.0	0.0	0.0	1.6	0.2
<b>Growth</b> (electrofishing data)											
Mean TL at Age-1 (mm)	N/A	N/A	N/A	N/A	N/A	N/A	N/A	N/A	N/A	N/A	
Mean TL at Age-3 (mm)	N/A	N/A	N/A	N/A	N/A	N/A	N/A	N/A	N/A	N/A	
<b>Relative Weight</b> (electrofishing data)											
Stock - Quality	none	none	none	none	none	none	none	none	none	82.2	82.2
Quality - Preferred	none	none	none	none	none	none	none	none	none	98.8	98.8
Preferred - Memorable	none	none	none	none	none	none	none	none	none	none	
Memorable - Trophy	none	none	none	none	none	none	none	none	none	none	
Trophy	none	none	none	none	none	none	none	none	none	none	
<b>Mortality</b> (electrofishing data)											
Total Mortality	N/A	N/A	N/A	N/A	N/A	N/A	N/A	N/A	N/A	N/A	N/A

## White Crappie

	2000	2001	2002	2003	2004	2005	2006	2007	2008	2009	Mean
<b>Recruitment</b> (electrofishing data) - CPUE = # fish/ hour)											
Age-0 CPUE	N/A	N/A	N/A	N/A	N/A	N/A	N/A	N/A	N/A	N/A	N/A
Substock CPUE	0.00	0.00	0.00	0.00	0.00	0.00	0.00	0.00	0.00	0.00	0.00
<b>Density</b> (electrofishing data) - CPUE = # fish/ hour)											
PSD	100%	none	none	none	none	none	none	none	none	none	100%
RSD - Preferred	50%	none	none	none	none	none	none	none	none	none	50%
CPUE	1.41	0.00	0.00	0.00	0.00	0.00	0.00	0.00	0.00	0.00	0.14
CPUE ≥ Stock	1.41	0.00	0.00	0.00	0.00	0.00	0.00	0.00	0.00	0.00	0.14
CPUE ≥ MSL (10")	0.00	0.00	0.00	0.00	0.00	0.00	0.00	0.00	0.00	0.00	0.00
<b>Growth</b> (electrofishing data)											
Mean TL at Age-1 (mm)	N/A	N/A	N/A	N/A	N/A	N/A	N/A	N/A	N/A	N/A	
Mean TL at Age-3 (mm)	N/A	N/A	N/A	N/A	N/A	N/A	N/A	N/A	N/A	N/A	
<b>Relative Weight</b> (electrofishing data)											
Stock - Quality	none	none	none	none	none	none	none	none	none	none	
Quality - Preferred	98.89	none	none	none	none	none	none	none	none	none	98.9
Preferred - Memorable	104.916	none	none	none	none	none	none	none	none	none	104.9
Memorable - Trophy	none	none	none	none	none	none	none	none	none	none	
Trophy	none	none	none	none	none	none	none	none	none	none	
<b>Mortality</b> (electrofishing data)											
Total Mortality	N/A	N/A	N/A	N/A	N/A	N/A	N/A	N/A	N/A	N/A	
<b>Stocking</b>											
# per Acre	0.0	0.0	0.0	0.0	0.0	0.0	0.0	0.0	0.0	0.0	0.0

## Black Crappie

	2000	2001	2002	2003	2004	2005	2006	2007	2008	2009	Mean
<b>Recruitment</b> (electrofishing data) - CPUE = # fish/ hour)											
Age-0 CPUE	N/A	N/A	N/A	N/A	N/A	N/A	N/A	N/A	N/A	N/A	N/A
Substock CPUE	0.00	0.00	0.00	0.00	0.00	0.00	0.00	0.00	0.00	0.00	0.00
<b>Density</b> (electrofishing data) - CPUE = # fish/ hour)											
PSD	75%	none	none	none	none	none	none	none	none	none	75.0%
RSD - Preferred	0%	none	none	none	none	none	none	none	none	none	0.0%
CPUE	3.02	0.00	0.00	0.00	0.00	0.00	0.00	0.00	0.00	0.00	0.30
CPUE ≥ Stock	3.02	0.00	0.00	0.00	0.00	0.00	0.00	0.00	0.00	0.00	0.30
CPUE ≥ MSL (10")	0.00	0.00	0.00	0.00	0.00	0.00	0.00	0.00	0.00	0.00	0.00
<b>Growth</b> (electrofishing data)											
Mean TL at Age-1 (mm)	N/A	N/A	N/A	N/A	N/A	N/A	N/A	N/A	N/A	N/A	N/A
Mean TL at Age-3 (mm)	N/A	N/A	N/A	N/A	N/A	N/A	N/A	N/A	N/A	N/A	N/A
<b>Relative Weight</b> (electrofishing data)											
Stock - Quality	94.036	none	none	none	none	none	none	none	none	none	94.0
Quality - Preferred	88.166	none	none	none	none	none	none	none	none	none	88.2
Preferred - Memorable	none	none	none	none	none	none	none	none	none	none	
Memorable - Trophy	none	none	none	none	none	none	none	none	none	none	
Trophy	none	none	none	none	none	none	none	none	none	none	
<b>Mortality</b> (electrofishing data)											
Total Mortality	N/A	N/A	N/A	N/A	N/A	N/A	N/A	N/A	N/A	N/A	N/A
<b>Stocking</b>											
# per Acre	0.0	0.0	0.0	0.0	0.0	0.0	0.0	0.0	0.0	0.0	0.0

## Tables



Table 1. Fish stocked in Ft. Patrick Henry Reservoir 1994-2009.

Species	Date	Rate (per acre)	Mean Length	Number
Rainbow Trout	1994	5.6	Adult	4,958
	1995	3.8	Adult	3,400
	1996	7.9	Adult	7,049
	1997	7.6	Adult	6,793
	1998	15.2	Adult	13,547
	1999	8.1	Adult	7,259
	2000	9.0	Adult	7,999
	2001	15.8	Adult	14,137
	2002	3.3	9 to 11-inches	2,887
	2003	14.9	9-inches	13,025
	2004	9.2	9-inches	8,034
	2005	3.4	9-inches	2,982
	2006	9.2	9-inches	8,001
	2007	18.9	9 to 10-inches	16,438
	2008	22.5	4 to 9.7-inches	19,599
2009	9.2	9-inches	8,010	
Brown Trout	2008	5.7	8-inches	5,011
	2009	5.7	8-inches	5,014

Table 2. Number of species collected by electrofishing in Ft. Patrick Henry Reservoir, 2009. Effort is in hours for electrofishing.

Species	Spring Electrofishing		
	No.	CPUE (# fish / hour)	Total Effort
Largemouth Bass	98	78.4	1.25
Smallmouth Bass	28	22.4	1.25
Spotted Bass	2	1.6	1.25
Black Crappie	0	0	1.25
Black-Nose Crappie	0	0	1.25
White Crappie	0	0	1.25

Table 3. Black bass catch; mean catch per unit effort and relative stock density by RSD category for Ft. Patrick Henry Reservoir 1998 – 2009.

Species	Year	Gear	Number of Samples	RSD Substock			RSD Stock - Quality			RSD Quality - Preferred			RSD Preferred-Memorabile			RSD Memorabile-Trophy			RSD Trophy			PSD	Total		
				#	CPUE	RSD	#	CPUE	RSD	#	CPUE	RSD	#	CPUE	RSD	#	CPUE	RSD	#	CPUE	RSD	%	#	CPUE	
Largemouth Bass	1998	EL	6	8	5.3	<b>13</b>	14	9.3	<b>26</b>	13	8.4	<b>25</b>	26	17	<b>49</b>	0	0	<b>0</b>	0	0	<b>0</b>	<b>74</b>	61	39.9	
	1999	EL	5	20	12	<b>29</b>	7	3.6	<b>14</b>	7	4.3	<b>14</b>	28	16	<b>57</b>	7	4.3	<b>14</b>	0	0	<b>0</b>	<b>86</b>	69	40.2	
	2000	EL	4	34	28	<b>35</b>	36	30	<b>58</b>	6	5.2	<b>10</b>	19	16	<b>31</b>	1	0.7	<b>2</b>	0	0	<b>0</b>	<b>42</b>	96	80	
	2001	EL	4	24	24	<b>28</b>	18	18	<b>29</b>	28	28	<b>45</b>	15	15	<b>24</b>	1	1	<b>2</b>	0	0	<b>0</b>	<b>71</b>	86	85.2	
	2002	EL																							
	2003	EL																							
	2004	EL	5	8	6.4	<b>11</b>	5	4	<b>7</b>	26	21	<b>39</b>	36	29	<b>54</b>	0	0	<b>0</b>	0	0	<b>0</b>	<b>93</b>	75	59.7	
	2005	EL	5	10	7.9	<b>20</b>	6	4.8	<b>15</b>	7	5.6	<b>18</b>	26	21	<b>65</b>	1	0.8	<b>3</b>	0	0	<b>0</b>	<b>85</b>	50	39.6	
	2006	EL	5	21	17	<b>30</b>	10	8	<b>21</b>	9	7.2	<b>19</b>	28	22	<b>58</b>	1	0.8	<b>2</b>	0	0	<b>0</b>	<b>79</b>	69	55.2	
	2007	EL	5	4	3.2	<b>10</b>	8	6.4	<b>21</b>	12	9.6	<b>32</b>	18	14	<b>47</b>	0	0	<b>0</b>	0	0	<b>0</b>	<b>79</b>	42	33.6	
	2008	EL	5	16	13	<b>24</b>	12	9.6	<b>24</b>	18	14	<b>36</b>	17	14	<b>34</b>	3	2.4	<b>6</b>	0	0	<b>0</b>	<b>76</b>	66	52.8	
	2009	EL	5	17	14	<b>17</b>	24	19	<b>30</b>	17	14	<b>21</b>	39	31	<b>48</b>	1	0.8	<b>1</b>	0	0	<b>0</b>	<b>70</b>	98	78.4	
	Smallmouth Bass	1998	EL	6	3	1.9	<b>17</b>	10	6.5	<b>37</b>	2	1.3	<b>13</b>	2	1.3	<b>13</b>	1	0.7	<b>7</b>	0	0	<b>0</b>	<b>33</b>	18	11.7
1999		EL	5	14	11	<b>32</b>	23	18	<b>77</b>	4	3.2	<b>13</b>	2	0.9	<b>7</b>	1	0.8	<b>3</b>	0	0	<b>0</b>	<b>23</b>	44	33.6	
2000		EL	4	18	15	<b>42</b>	11	9	<b>44</b>	10	8.5	<b>40</b>	3	2.6	<b>12</b>	1	0.7	<b>4</b>	0	0	<b>0</b>	<b>56</b>	43	33.4	
2001		EL	4	11	11	<b>48</b>	2	2	<b>17</b>	2	2	<b>17</b>	5	5	<b>42</b>	3	3	<b>25</b>	0	0	<b>0</b>	<b>83</b>	23	22.8	
2002		EL																							
2003		EL																							
2004		EL	5	6	4.8	<b>21</b>	9	7.2	<b>41</b>	5	4	<b>23</b>	5	4	<b>23</b>	2	1.6	<b>9</b>	1	0.8	<b>5</b>	<b>60</b>	28	22.3	
2005		EL	5	3	2.4	<b>12</b>	11	8.7	<b>50</b>	3	2.4	<b>14</b>	5	3.9	<b>23</b>	2	1.6	<b>9</b>	0	0	<b>0</b>	<b>50</b>	25	19.8	
2006		EL	5	14	11	<b>42</b>	8	6.4	<b>42</b>	3	2.4	<b>16</b>	2	1.6	<b>11</b>	5	4	<b>26</b>	1	0.8	<b>5</b>	<b>58</b>	33	26.4	
2007		EL	5	10	8	<b>27</b>	9	7.2	<b>33</b>	4	3.2	<b>15</b>	10	8	<b>37</b>	4	3.2	<b>15</b>	0	0	<b>0</b>	<b>67</b>	37	29.6	
2008		EL	5	14	11	<b>30</b>	16	13	<b>48</b>	9	7.2	<b>27</b>	5	4	<b>15</b>	3	2.4	<b>9</b>	0	0	<b>0</b>	<b>52</b>	47	37.6	
2009		EL	5	7	5.6	<b>25</b>	7	5.6	<b>33</b>	4	3.2	<b>19</b>	9	7.2	<b>43</b>	1	0.8	<b>5</b>	0	0	<b>0</b>	<b>67</b>	28	22.4	

## ***Largemouth Bass***

Table 4. Largemouth bass mean relative weights (Wr) in Ft. Patrick Henry Reservoir, spring 2009.

<b>Length Group</b>	<b>Mean Wr</b>	<b>Std. Error</b>	<b>N</b>
150	84.896	9.572	5
175	88.902	3.302	8
200	84.380	2.079	11
225	93.892	1.340	2
250	85.678	1.742	7
275	98.233	4.637	4
300	92.994	4.240	2
325	96.739	2.906	9
350	101.676	3.106	6
375	101.577	2.130	11
400	98.847	2.045	10
425	93.956	2.232	8
450	98.041	4.179	7
475	98.937	6.148	3
500	94.165		1
525			0
<b>Total =</b>			<b>94</b>

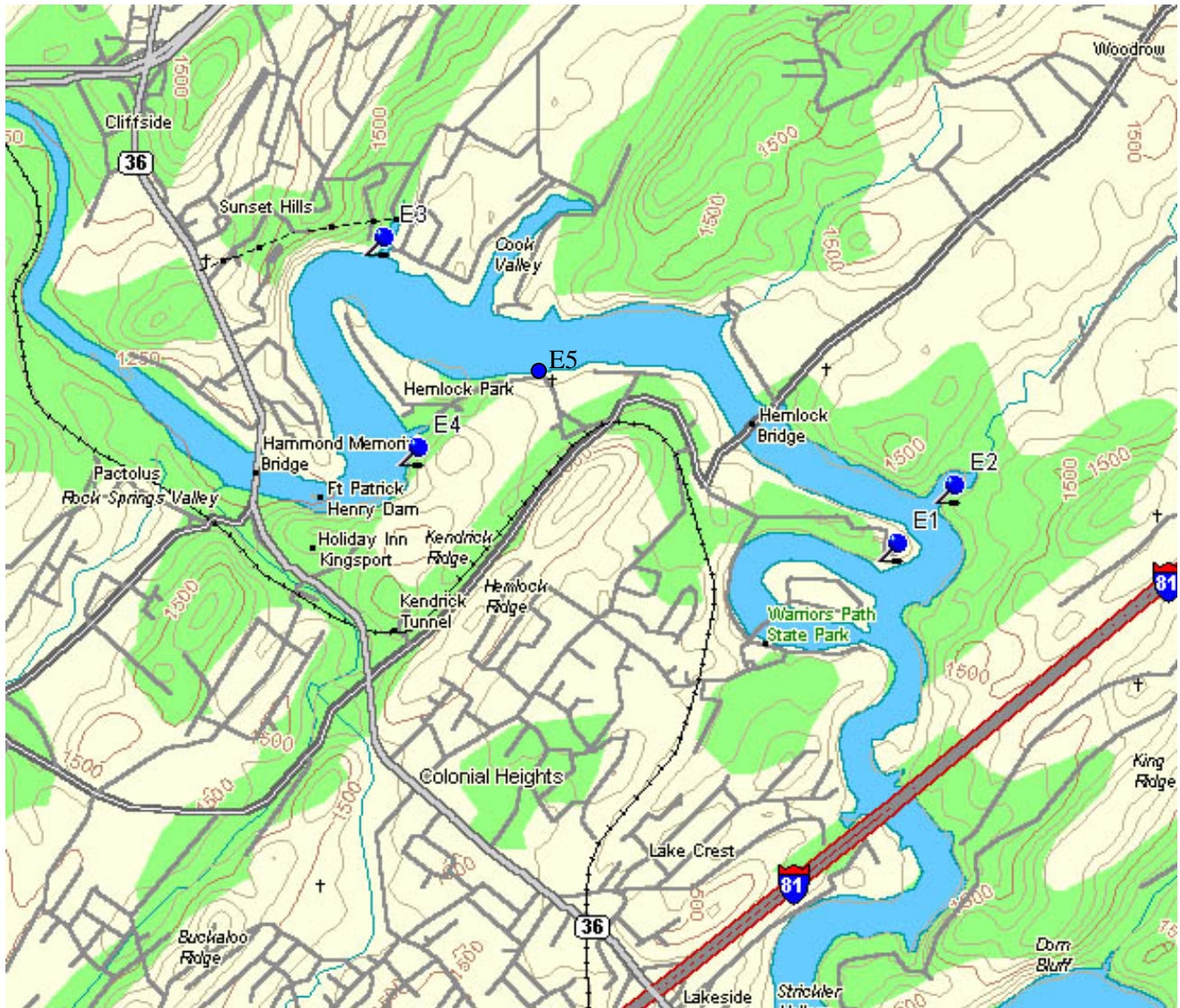
## ***Smallmouth Bass***

Table 5. Smallmouth bass mean relative weights (Wr) in Ft. Patrick Henry Reservoir, spring 2009.

<b>Length Group</b>	<b>Mean Wr</b>	<b>Std. Error</b>	<b>N</b>
150	85.398	3.717	3
175	85.922	2.852	4
200			0
225	79.122	2.838	4
250			0
275	97.365		1
300	83.769		1
325	79.909	4.702	2
350	86.374	1.929	3
375	88.353	3.942	5
400	75.573		1
425			0
450	104.466		1
475			0
500			0
525			0
<b>Total =</b>			<b>25</b>

## Figures

Figure 1. Ft. Patrick Henry Reservoir with sites sampled in 2009.



## Largemouth Bass

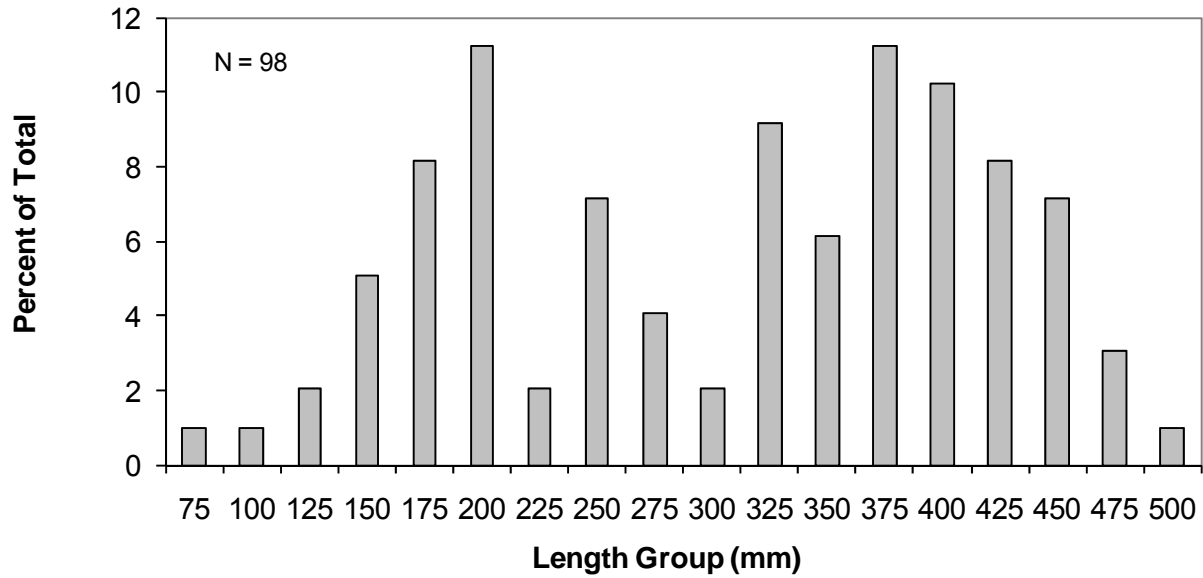


Figure 2. Largemouth bass length frequency in Patrick Henry Reservoir, spring 2009.

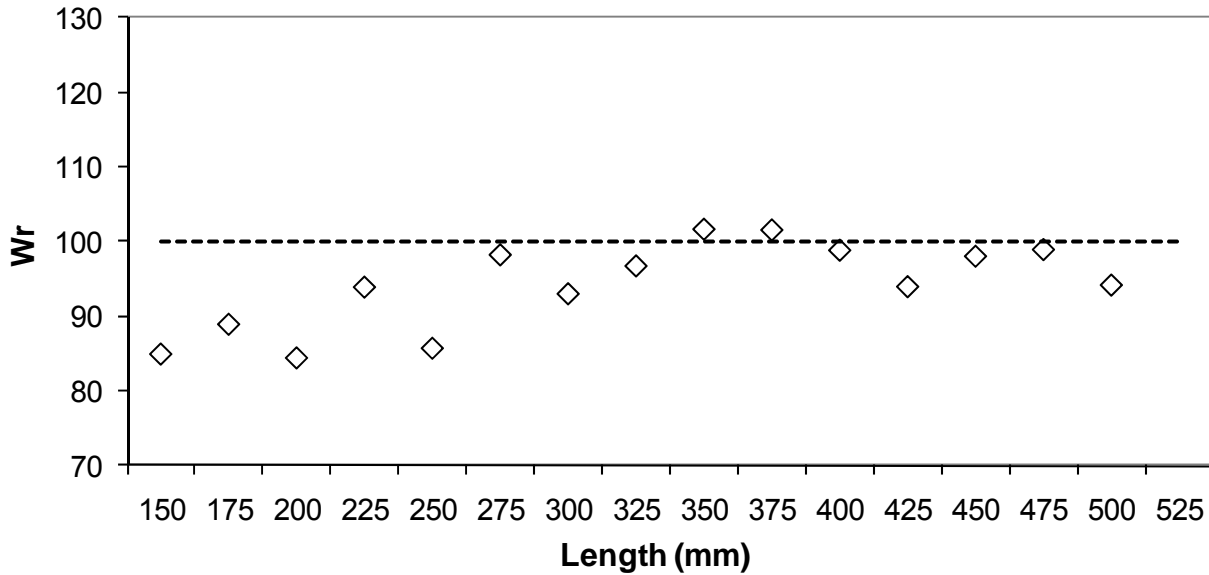


Figure 3. Largemouth bass mean relative weights (Wr) in Patrick Henry Reservoir, spring 2009.

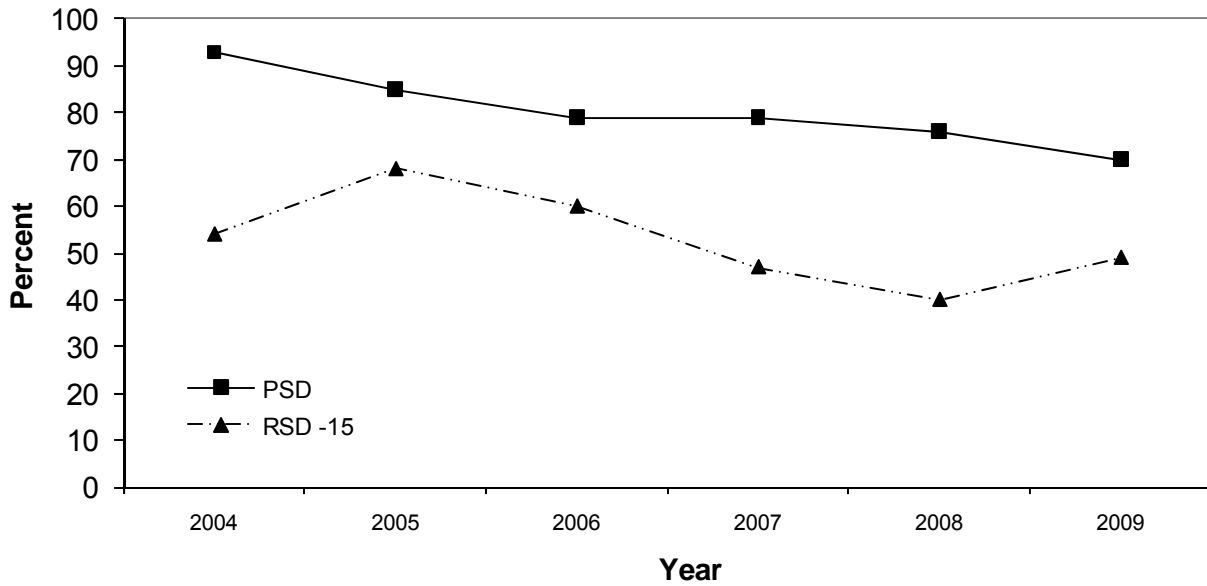


Figure 4. Largemouth bass traditional PSD and RSD -15 values in Ft. Patrick Henry Reservoir 2004 - 2009

### ***Smallmouth Bass***

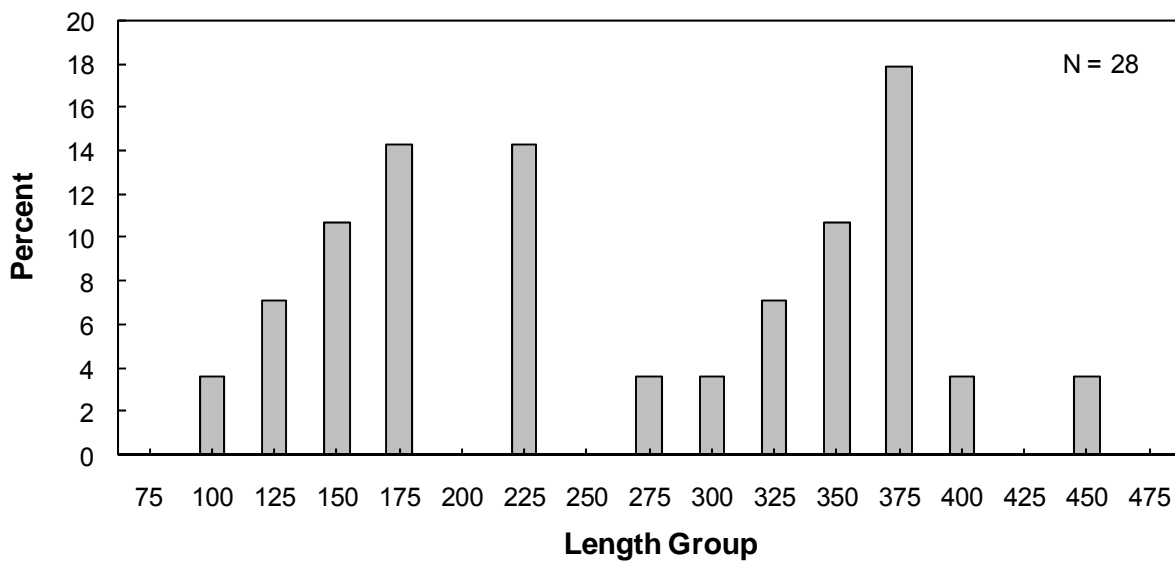


Figure 5. Smallmouth bass length frequency by percent in Patrick Henry Reservoir, spring 2009.

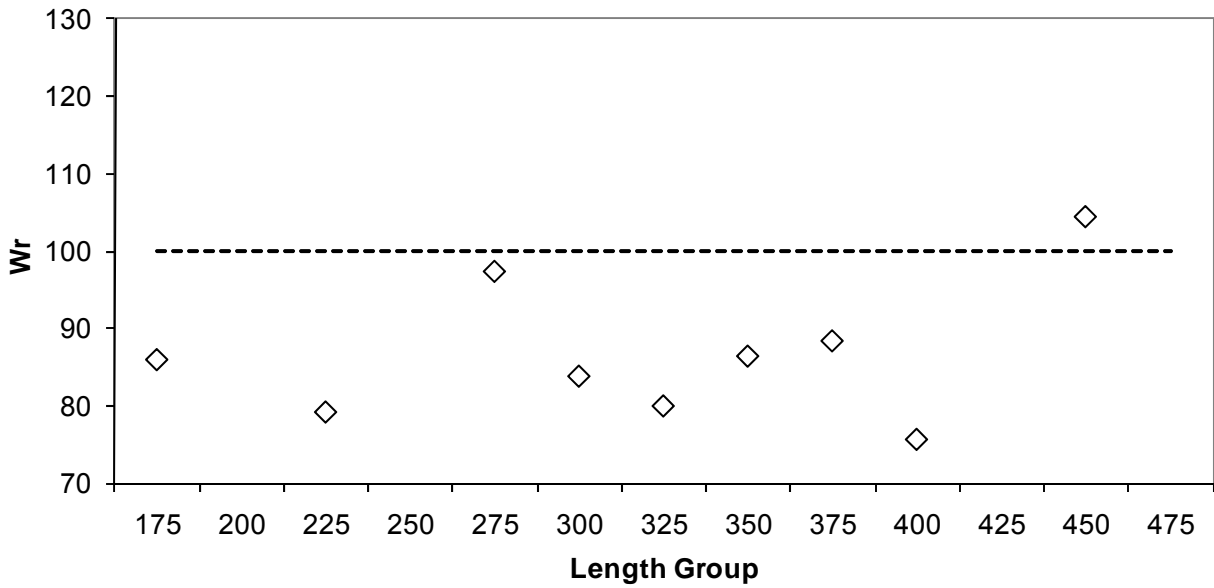


Figure 6. Smallmouth bass mean relative weights (Wr) in Patrick Henry Reservoir, spring 2009.

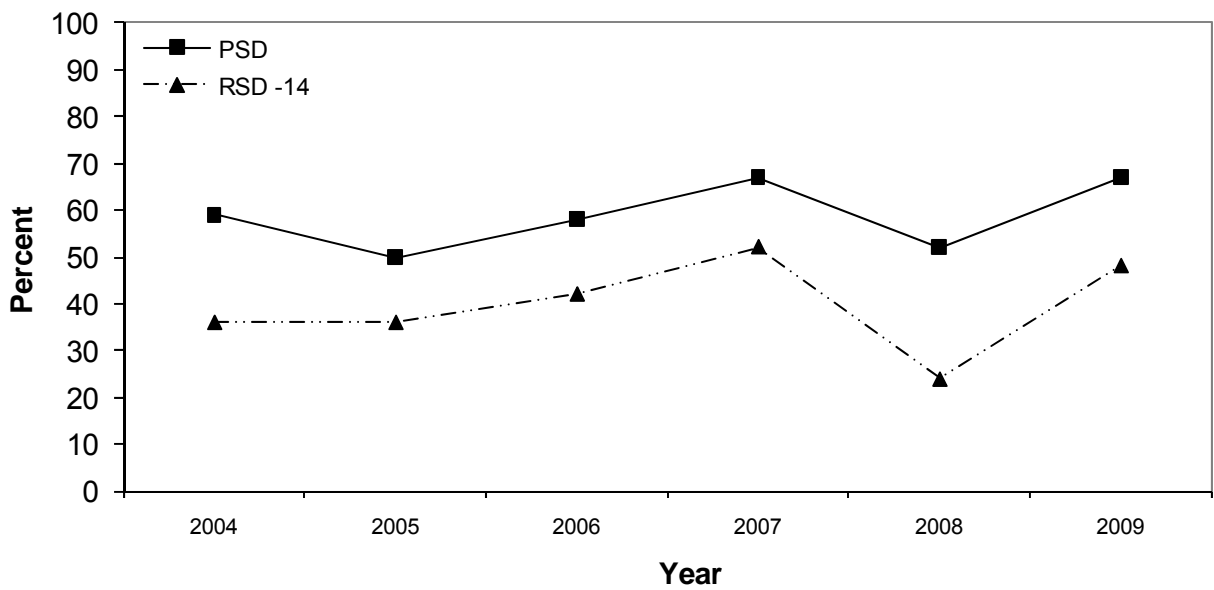


Figure 7. Smallmouth bass traditional PSD and RSD -14 values in Ft. Patrick Henry Reservoir 2004 – 2009.



Appendix A  
Reservoir Elevations

Table A1. Ft. Patrick Henry Reservoir elevation data for 2009. TVA Data

Elevation	Month	Day	Elevation	Month	Day	Elevation	Month	Day
1260.78	January	1	1261.03	February	24	1260.80	April	19
1260.88	January	2	1261.07	February	25	1260.70	April	20
1260.96	January	3	1261.33	February	26	1260.73	April	21
1260.63	January	4	1261.32	February	27	1260.69	April	22
1260.80	January	5	1260.50	February	28	1260.64	April	23
1260.63	January	6	1259.47	March	1	1260.57	April	24
1259.64	January	7	1259.54	March	2	1260.83	April	25
1261.67	January	8	1260.58	March	3	1261.40	April	26
1260.26	January	9	1261.86	March	4	1261.17	April	27
1261.60	January	10	1261.64	March	5	1260.90	April	28
1262.12	January	11	1261.66	March	6	1260.66	April	29
1261.04	January	12	1261.32	March	7	1260.54	April	30
1262.22	January	13	1260.80	March	8	1260.76	May	1
1260.83	January	14	1260.16	March	9	1261.37	May	2
1260.28	January	15	1260.45	March	10	1261.84	May	3
1260.69	January	16	1259.43	March	11	1261.36	May	4
1260.28	January	17	1259.93	March	12	1261.76	May	5
1260.48	January	18	1260.34	March	13	1261.62	May	6
1261.33	January	19	1260.05	March	14	1261.04	May	7
1261.05	January	20	1260.34	March	15	1261.99	May	8
1260.93	January	21	1260.10	March	16	1261.85	May	9
1260.86	January	22	1259.92	March	17	1261.43	May	10
1261.05	January	23	1260.26	March	18	1259.88	May	11
1261.25	January	24	1259.99	March	19	1261.19	May	12
1261.38	January	25	1260.39	March	20	1262.49	May	13
1261.20	January	26	1260.44	March	21	1261.55	May	14
1260.70	January	27	1260.37	March	22	1261.96	May	15
1259.57	January	28	1259.95	March	23	1261.86	May	16
1261.41	January	29	1259.47	March	24	1261.51	May	17
1260.32	January	30	1260.46	March	25	1261.99	May	18
1261.07	January	31	1260.26	March	26	1262.31	May	19
1261.19	February	1	1259.75	March	27	1261.25	May	20
1260.90	February	2	1260.37	March	28	1261.31	May	21
1261.54	February	3	1260.18	March	29	1260.72	May	22
1260.34	February	4	1260.69	March	30	1261.49	May	23
1260.87	February	5	1260.88	March	31	1261.55	May	24
1260.71	February	6	1260.91	April	1	1262.44	May	25
1261.31	February	7	1260.72	April	2	1261.76	May	26
1261.08	February	8	1260.67	April	3	1262.38	May	27
1260.79	February	9	1260.77	April	4	1261.24	May	28
1260.28	February	10	1260.76	April	5	1261.11	May	29
1260.46	February	11	1260.90	April	6	1261.41	May	30
1260.53	February	12	1260.73	April	7	1261.18	May	31
1260.42	February	13	1260.80	April	8	1261.45	June	1
1260.74	February	14	1261.07	April	9	1260.90	June	2
1260.93	February	15	1260.78	April	10	1260.59	June	3
1260.80	February	16	1260.92	April	11	1260.50	June	4
1261.43	February	17	1260.94	April	12	1260.62	June	5
1261.31	February	18	1260.91	April	13	1262.02	June	6
1260.80	February	19	1261.15	April	14	1261.73	June	7
1261.16	February	20	1261.06	April	15	1260.63	June	8
1260.88	February	21	1261.11	April	16	1260.50	June	9
1261.00	February	22	1260.98	April	17	1260.79	June	10
1261.19	February	23	1261.04	April	18	1260.64	June	11

Table A1. Continued.

Elevation	Month	Day	Elevation	Month	Day	Elevation	Month	Day
1260.47	June	12	1261.07	August	5	1261.00	September	28
1261.13	June	13	1261.49	August	6	1261.72	September	29
1260.77	June	14	1260.12	August	7	1261.20	September	30
1260.16	June	15	1260.68	August	8	1260.73	October	1
1260.59	June	16	1260.93	August	9	1261.36	October	2
1261.30	June	17	1261.13	August	10	1260.55	October	3
1259.78	June	18	1261.43	August	11	1261.04	October	4
1258.83	June	19	1261.60	August	12	1261.26	October	5
1259.68	June	20	1261.52	August	13	1260.99	October	6
1260.97	June	21	1261.04	August	14	1261.75	October	7
1259.94	June	22	1260.38	August	15	1260.96	October	8
1261.10	June	23	1260.63	August	16	1259.67	October	9
1260.01	June	24	1260.19	August	17	1260.96	October	10
1260.21	June	25	1260.22	August	18	1260.49	October	11
1260.33	June	26	1259.25	August	19	1260.96	October	12
1260.72	June	27	1260.39	August	20	1260.67	October	13
1260.36	June	28	1260.78	August	21	1260.15	October	14
1260.28	June	29	1261.20	August	22	1259.79	October	15
1260.67	June	30	1260.62	August	23	1260.46	October	16
1260.44	July	1	1260.77	August	24	1260.05	October	17
1260.56	July	2	1260.76	August	25	1260.10	October	18
1260.70	July	3	1260.42	August	26	1259.98	October	19
1260.60	July	4	1260.93	August	27	1260.56	October	20
1260.33	July	5	1261.38	August	28	1260.40	October	21
1261.02	July	6	1261.52	August	29	1259.93	October	22
1260.93	July	7	1261.53	August	30	1260.25	October	23
1260.39	July	8	1260.93	August	31	1260.21	October	24
1260.24	July	9	1260.57	September	1	1260.64	October	25
1259.82	July	10	1260.56	September	2	1260.76	October	26
1261.03	July	11	1260.68	September	3	1260.11	October	27
1261.52	July	12	1260.90	September	4	1259.46	October	28
1260.98	July	13	1260.94	September	5	1259.77	October	29
1260.50	July	14	1261.06	September	6	1259.37	October	30
1260.63	July	15	1260.88	September	7	1260.06	October	31
1260.67	July	16	1260.77	September	8	1260.82	November	1
1260.39	July	17	1261.76	September	9	1261.05	November	2
1260.61	July	18	1262.21	September	10	1260.53	November	3
1260.75	July	19	1261.74	September	11	1260.12	November	4
1260.45	July	20	1260.74	September	12	1259.60	November	5
1260.28	July	21	1259.55	September	13	1260.24	November	6
1260.33	July	22	1259.27	September	14	1259.96	November	7
1260.51	July	23	1261.25	September	15	1259.74	November	8
1260.34	July	24	1260.55	September	16	1259.70	November	9
1260.05	July	25	1260.62	September	17	1259.50	November	10
1260.68	July	26	1260.36	September	18	1259.98	November	11
1261.19	July	27	1261.10	September	19	1259.10	November	12
1261.07	July	28	1261.56	September	20	1258.56	November	13
1261.72	July	29	1259.97	September	21	1260.60	November	14
1262.33	July	30	1260.82	September	22	1260.54	November	15
1260.92	July	31	1260.83	September	23	1261.48	November	16
1260.68	August	1	1260.14	September	24	1260.35	November	17
1260.55	August	2	1260.62	September	25	1261.56	November	18
1260.28	August	3	1261.61	September	26	1261.58	November	19
1260.35	August	4	1261.52	September	27	1259.22	November	20

Table A1. Continued.

<b>Elevation</b>	<b>Month</b>	<b>Day</b>
1260.26	November	21
1260.60	November	22
1260.11	November	23
1260.13	November	24
1260.09	November	25
1260.08	November	26
1258.76	November	27
1259.78	November	28
1259.46	November	29
1260.31	November	30
1260.56	December	1
1259.80	December	2
1260.23	December	3
1261.53	December	4
1261.60	December	5
1261.01	December	6
1260.20	December	7
1259.86	December	8
1259.48	December	9
1258.61	December	10
1260.23	December	11
1260.67	December	12
1261.14	December	13
1260.68	December	14
1260.94	December	15
1260.92	December	16
1260.59	December	17
1258.35	December	18
1258.19	December	19
1260.39	December	20
1259.41	December	21
1262.49	December	22
1260.59	December	23
1258.36	December	24
1259.64	December	25
1259.90	December	26
1260.45	December	27
1260.36	December	28
1260.92	December	29
1260.00	December	30
1261.61	December	31

Figure A1. Ft. Patrick Henry Reservoir daily reservoir elevations for 2009 (TVA data).

