

**Ft. Patrick Henry Reservoir**  
**Annual Report 2007**

Prepared By:

John Hammonds  
and  
Douglas C. Peterson

Tennessee Wildlife Resources Agency  
Region IV  
3030 Wildlife Way  
Morristown, TN 37814

All activities covered in this report were conducted under the following TWRA cost centers: 4311, 4312, and 4313. Development of this report was financed in part by funds from Federal Aid in Fish and Wildlife Restoration (Public Law 91-503) as documented in Federal Aid Project FW-6.

This program receives Federal Aid in Fish and Wildlife Restoration. Under Title VI of the Civil Rights Act of 1964 and Section 504 of the Rehabilitation Act of 1973, the United States Department of the Interior prohibits discrimination on the basis of race, color, national origin, or disability. If you believe you have been discriminated against in any program, activity, or facility as described above, or if you desire further information, please write to:

Office of Equal Opportunity  
United States Department of the Interior  
Washington, D.C. 20240

## Table of contents

	Page
<b>Species Summaries .....</b>	<b>3-4</b>
<b>Stocking .....</b>	<b>5</b>
<b>Habitat .....</b>	<b>5</b>
 <b>Tables</b>	
1. Morphometric, physical, and chemical characteristics .....	7
2. Fish stocked in Ft. Patrick Henry Reservoir .....	7
3. Number of species collected by electrofishing .....	8
4. Black bass cpue and RSD by category .....	9
5. Largemouth bass mean relative weights (Wr) .....	10
6. Smallmouth bass mean relative weights (Wr) .....	10
 <b>Figures</b>	
1. Sites sampled on Ft Patrick Henry Reservoir in 2004 .....	12
2. Largemouth bass length frequency by percent .....	13
3. Largemouth bass mean relative weights (Wr) .....	13
4. Largemouth bass traditional PSD and RSD -15 values .....	14
5. Smallmouth bass length frequency by percent .....	14
6. Smallmouth bass mean relative weights (Wr) .....	15
7. Smallmouth bass traditional PSD and RSD -14 values .....	15
 <b>Appendix A – Reservoir Elevations</b>	
Table A1. Daily reservoir elevation data .....	17
Figure A1. Daily reservoir elevation data with guide curve .....	20

## Ft. Patrick Henry Reservoir - 2007

### Largemouth Bass

Population Parameter	Annual Rating	Measure	Gear	Value
Recruitment	Fair	Sub-stock CPUE	Electrofishing	3.2 fish/hr.
Growth	N/A	Mean TL at Age-3	Electrofishing	no data
	Good	RSD-P (380 mm)	Electrofishing	47 %
Density	Good	CPUE $\geq$ Stock Size (203 mm)	Electrofishing	30.4 fish/hr.
	N/A	CPUE $\geq$ Minimum Size Limit	Electrofishing	N/A
Mortality	N/A	Total Mortality (Z)	Electrofishing	no data
Angling Pressure	N/A	Fishing Effort (hours)	Creel Survey	N/A
Fishing Success	N/A	Angler Catch Rate	Creel Survey	N/A
Value of Fishery	N/A	Trip Expenditures	Creel Survey	N/A

#### *Fishery Forecast:*

Largemouth bass catch rates for 2007 were below average for Patrick Henry, but the size structure remained stable. We continue to see good size structure of largemouth bass in Patrick Henry which reflects a quality fishery. Recruitment was noted again and this fishery should remain stable for 2008

#### *Management Recommendations:*

Maintain the current regulations. Attempt to collect age structure data in the future.

## Smallmouth Bass

Population Parameter	Annual Rating	Measure	Gear	Value
Recruitment	Good	Sub-stock CPUE	Electrofishing	8.0 fish/hr.
Growth	N/A	Mean TL at Age-3	Electrofishing	no data
	Good	RSD-P (350 mm)	Electrofishing	52 %
Density	Good	CPUE $\geq$ Stock Size (178 mm)	Electrofishing	21.6 fish/hr.
	N/A	CPUE $\geq$ Minimum Size Limit	Electrofishing	N/A
Mortality	N/A	Total Mortality (Z)	Electrofishing	no data
Angling Pressure	N/A	Fishing Effort (hours)	Creel Survey	N/A
Fishing Success	N/A	Angler Catch Rate	Creel Survey	N/A
Value of Fishery	N/A	Trip Expenditures	Creel Survey	N/A

### *Fishery Forecast:*

Densities of smallmouth bass and the percentage of larger size fish in the population increased again in 2007. The increase in larger size smallmouth bass will hopefully continue in this reservoir to have a high quality smallmouth bass fishery. Recruitment was again noted in 2007 which should help this fishery to remain stable.

### *Management Recommendations:*

Maintain the current regulations. Attempt to collect age structure data in the future.

## Stocking and Stocking Evaluations

<b>Species</b>	<b>Number Stocked</b>	<b>Mark</b>	<b>Evaluation</b>	<b># Fish / Net Night</b>
Rainbow Trout	16,438	None	No Effort	N/A

## Tables

Table 1. The morphometric, physical, and chemical characteristics of Ft. Patrick Henry Reservoir.

<b>Parameter</b>	<b>Measurement</b>	
	<b>English</b>	<b>Metric</b>
Surface Area	872 ac	353 ha
Drainage Area	1,903 sq. mi	4,933 sq. km
Full Pool Elevation	1,263 ft msl	385 m msl
Mean Annual Fluctuation	5 feet	1.5 m
Shoreline Distance	31 mi	50 km
Maximum Depth	76 ft	23.2 m
Thermocline Depth	9 ft	2.7m
Mean Chlorophyll (Forebay)	11.1 ppm	11.1 mg/l
Shoreline Development	34%	
Trophic Status (Forebay)	mesotrophic	
Trophic Index, Carlson (1977)	54.2	
Hydraulic Retention Time	38 days	
Reservoir Age	54 years	

Table 2. Fish stocked in Ft. Patrick Henry Reservoir 1993-2007.

<b>Species</b>	<b>Date</b>	<b>Rate (per acre)</b>	<b>Mean Length</b>	<b>Number</b>
Rainbow Trout	1993	20.0	Adult	17,859
	1994	5.6	Adult	4,958
	1995	3.8	Adult	3,400
	1996	7.9	Adult	7,049
	1997	7.6	Adult	6,793
	1998	15.2	Adult	13,547
	1999	8.1	Adult	7,259
	2000	9.0	Adult	7,999
	2001	15.8	Adult	14,137
	2002	3.3	9 to 11-inches	2,887
	2003	14.9	9-inches	13,025
	2004	9.2	9-inches	8,034
	2005	3.4	9-inches	2,982
	2006	9.2	9-inches	8,001
2007	18.9	9 to 10 -inches	16,438	

Table 3. Number of species collected by electrofishing in Ft. Patrick Henry Reservoir, 2007. Effort is in hours for electrofishing.

Species	Spring Electrofishing		
	No.	CPUE (# fish / hour)	Total Effort
Largemouth Bass	42	33.6	1.3
Smallmouth Bass	37	29.6	1.3
Spotted Bass	0	0	1.3
Black Crappie	0	0	1.3
Black-Nose Crappie	0	0	1.3
White Crappie	0	0	1.3



Table 4. Black bass catch; mean catch per unit effort and relative stock density by RSD category for Ft. Patrick Henry Reservoir 2004 – 2007.

Species	Year	Gear	Number of Samples	RSD Substock			RSD Stock - Quality			RSD Quality - Preferred			RSD Preferred-Memorable			RSD Memorable-Trophy			RSD Trophy			PSD	Total	
				#	CPUE	RSD	#	CPUE	RSD	#	CPUE	RSD	#	CPUE	RSD	#	CPUE	RSD	#	CPUE	RSD	%	#	CPUE
Largemouth Bass	2004	EL	5	8	6.4	<b>11</b>	5	4	<b>7</b>	26	21	<b>39</b>	36	29	<b>54</b>	0	0	<b>0</b>	0	0	<b>0</b>	<b>93</b>	75	59.7
	2005	EL	5	10	7.9	<b>20</b>	6	4.8	<b>15</b>	7	5.6	<b>18</b>	26	21	<b>65</b>	1	0.8	<b>3</b>	0	0	<b>0</b>	<b>85</b>	50	39.6
	2006	EL	5	21	17	<b>30</b>	10	8	<b>21</b>	9	7.2	<b>19</b>	28	22	<b>58</b>	1	0.8	<b>2</b>	0	0	<b>0</b>	<b>79</b>	69	55.2
	2007	EL	5	4	3.2	<b>10</b>	8	6.4	<b>21</b>	12	9.6	<b>32</b>	18	14	<b>47</b>	0	0	<b>0</b>	0	0	<b>0</b>	<b>79</b>	42	33.6
Smallmouth Bass	2004	EL	5	6	4.8	<b>21</b>	9	7.2	<b>41</b>	5	4	<b>23</b>	5	4	<b>23</b>	2	1.6	<b>9</b>	1	0.8	<b>5</b>	<b>60</b>	28	22.3
	2005	EL	5	3	2.4	<b>12</b>	11	8.7	<b>50</b>	3	2.4	<b>14</b>	5	3.9	<b>23</b>	2	1.6	<b>9</b>	0	0	<b>0</b>	<b>50</b>	25	19.8
	2006	EL	5	14	11	<b>42</b>	8	6.4	<b>42</b>	3	2.4	<b>16</b>	2	1.6	<b>11</b>	5	4	<b>26</b>	1	0.8	<b>5</b>	<b>58</b>	33	26.4
	2007	EL	5	10	8	<b>27</b>	9	7.2	<b>33</b>	4	3.2	<b>15</b>	10	8	<b>37</b>	4	3.2	<b>15</b>	0	0	<b>0</b>	<b>67</b>	37	29.6

## ***Largemouth Bass***

Table 5. Largemouth bass mean relative weights (Wr) in Ft. Patrick Henry Reservoir, spring 2007.

<b>Length Group</b>	<b>Mean Wr</b>	<b>Std. Error</b>	<b>N</b>
150	80.681		1
175	96.777	1.276	2
200	86.432	2.366	3
225	80.492		1
250	96.442	6.652	4
275			
300	88.904	1.046	2
325	99.563	2.687	6
350	86.438	4.677	3
375	95.334	4.123	7
400	98.067	2.886	3
425	96.084	0.609	2
450	97.887	1.608	3
475	97.847	1.972	4
500			
<b>Total =</b>			<b>60</b>

## ***Smallmouth Bass***

Table 6. Smallmouth bass mean relative weights (Wr) in Ft. Patrick Henry Reservoir, spring 2007.

<b>Length Group</b>	<b>Mean Wr</b>	<b>Std. Error</b>	<b>N</b>
150	90.717	3.820	7
175	87.745	1.658	5
200	97.717	6.051	3
225	101.672		1
250			
275	87.365		1
300	91.657	7.533	2
325	82.790	10.147	2
350	86.894	2.767	4
375	77.905	1.923	3
400	82.313	2.351	3
425	88.648		1
450			
475	77.370	3.602	2
500	97.297		1
525			
<b>Total =</b>			<b>21</b>

## Figures

Figure 1. Ft. Patrick Henry Reservoir with sites sampled in 2007.



## Largemouth Bass

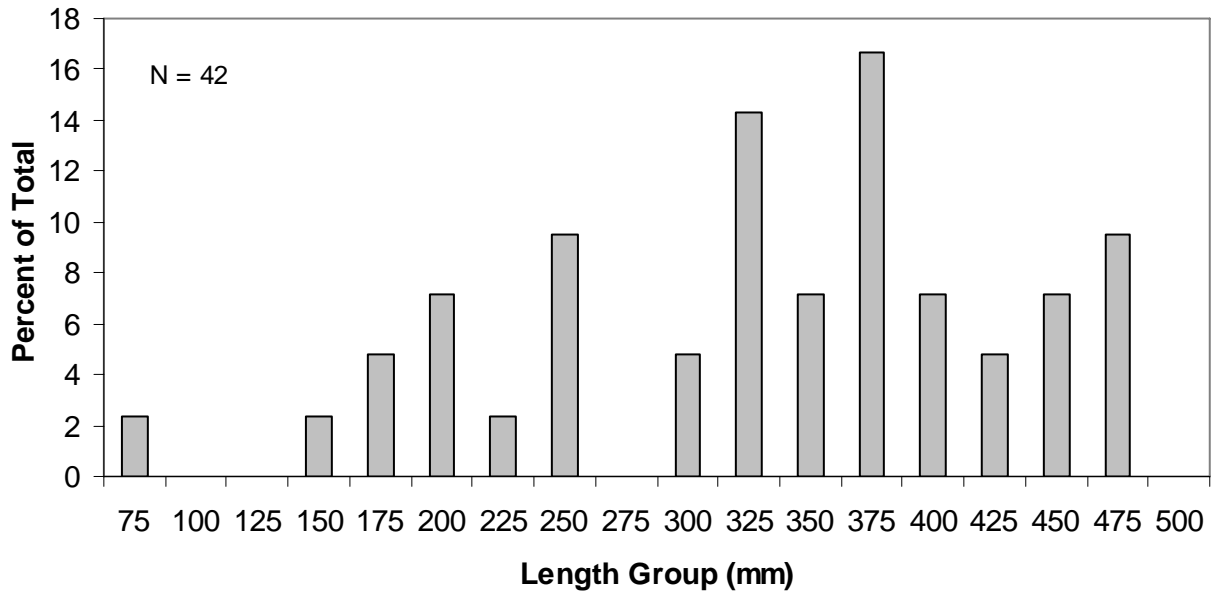


Figure 2. Largemouth bass length frequency in Patrick Henry Reservoir, spring 2007.

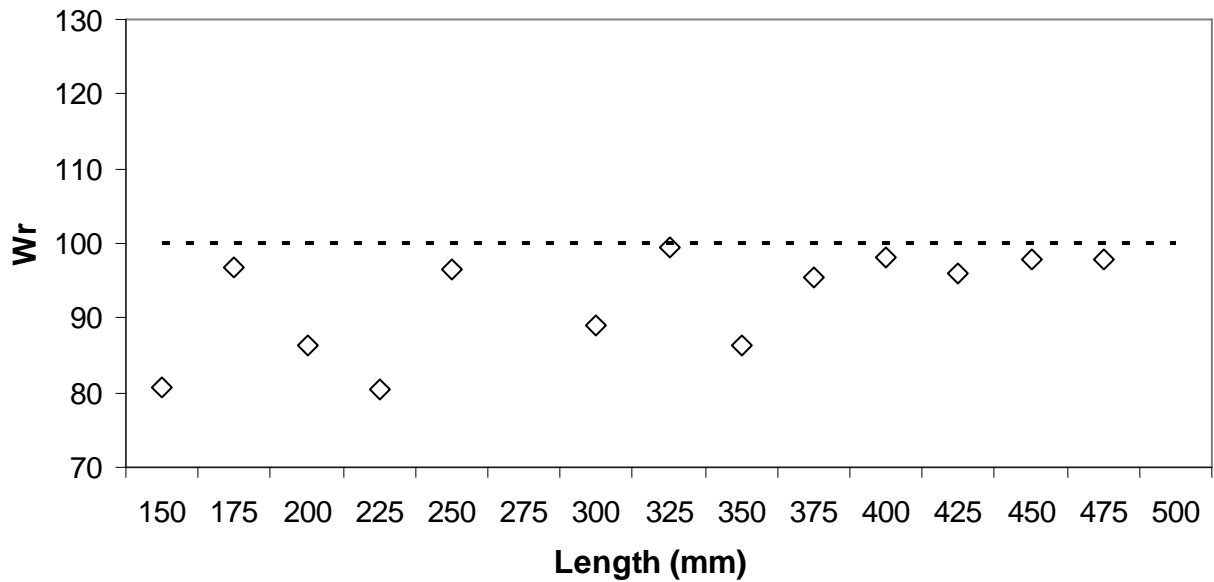


Figure 3. Largemouth bass mean relative weights ( $W_r$ ) in Patrick Henry Reservoir, spring 2007.

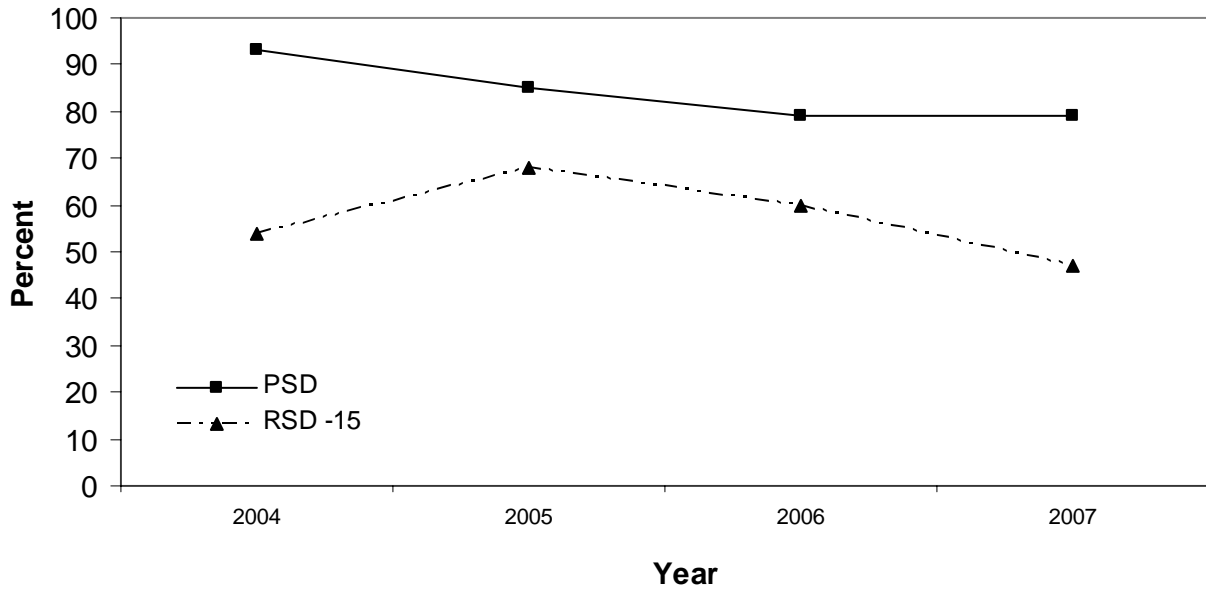


Figure 4. Largemouth bass traditional PSD and RSD -15 values in Ft. Patrick Henry Reservoir 2004– 2007

***Smallmouth Bass***

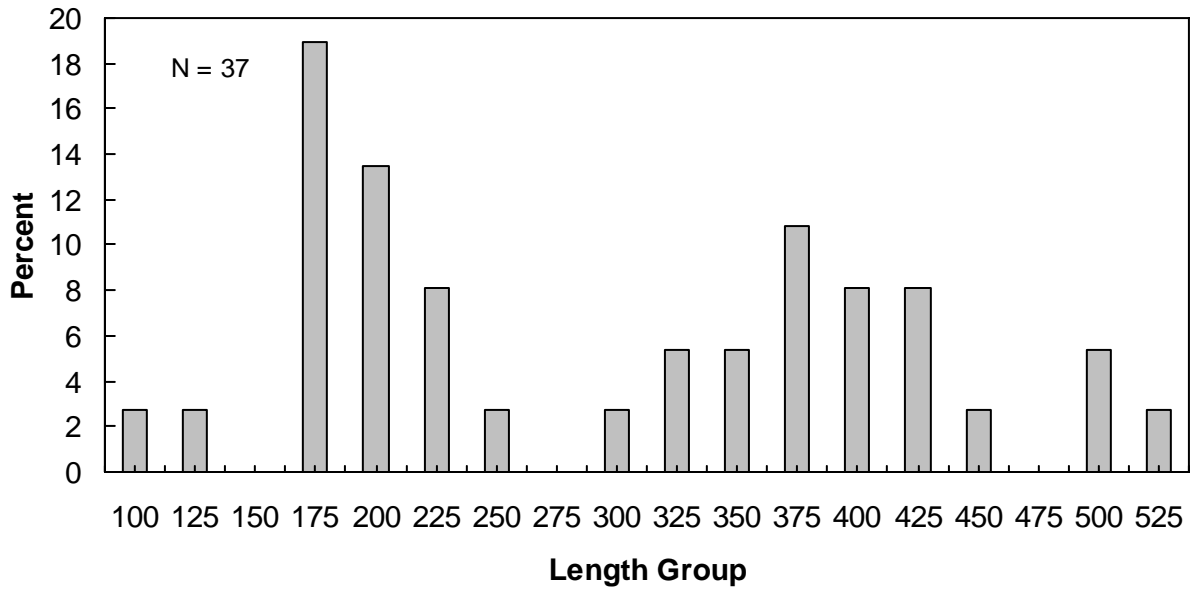


Figure 5. Smallmouth bass length frequency by percent in Patrick Henry Reservoir, spring 2007.

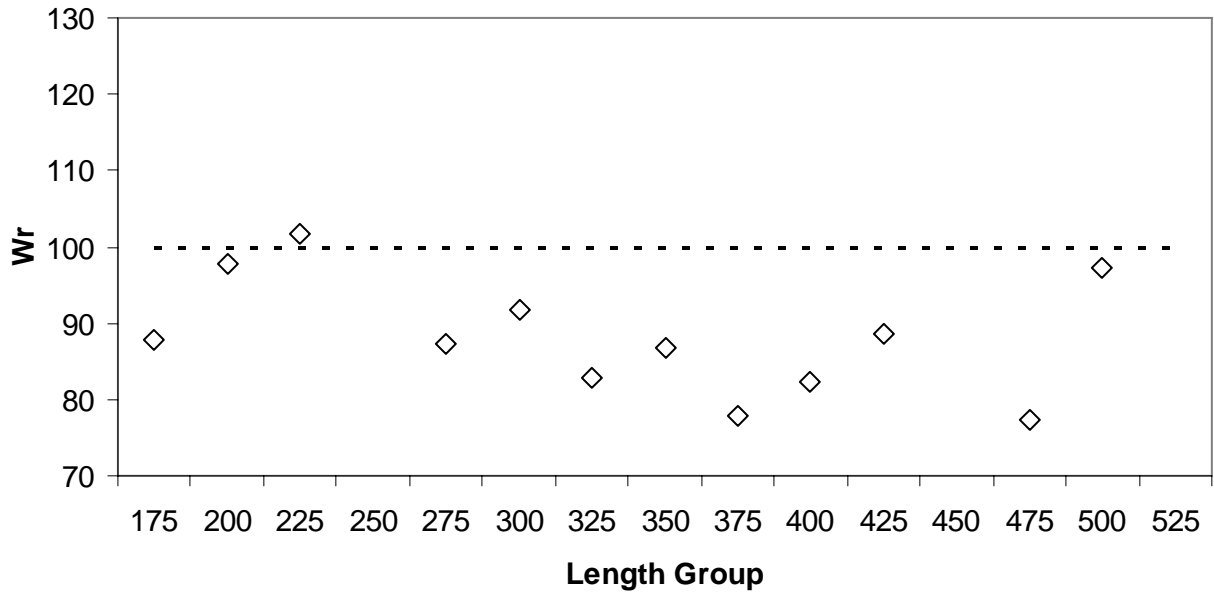


Figure 6. Smallmouth bass mean relative weights (Wr) in Patrick Henry Reservoir, spring 2007.

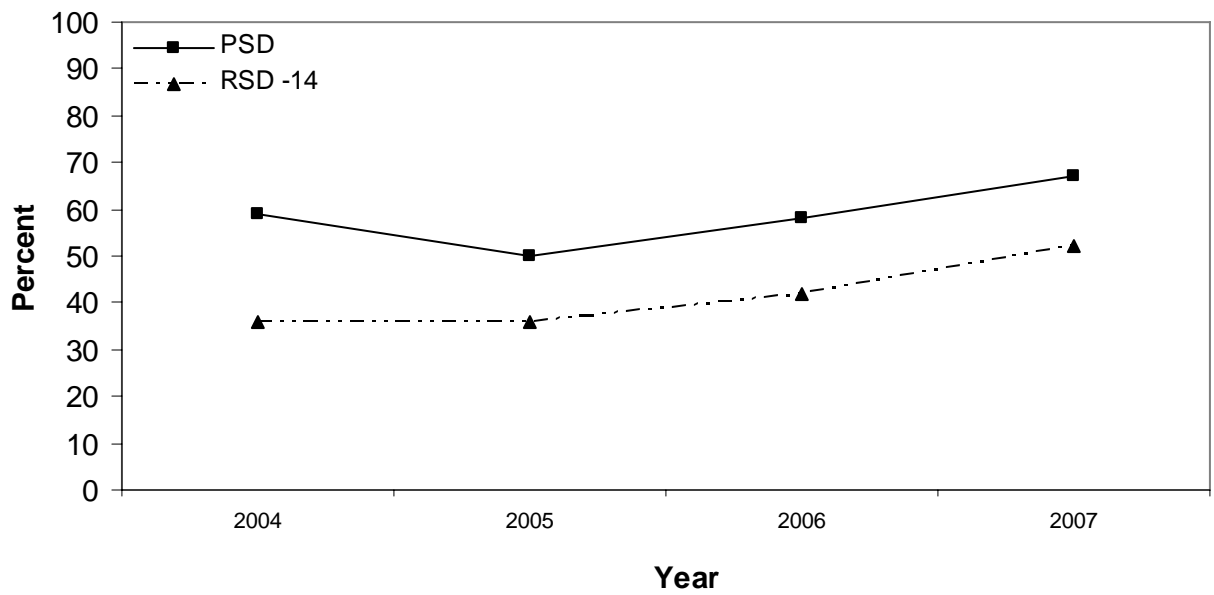


Figure 7. Smallmouth bass traditional PSD and RSD -14 values in Ft. Patrick Henry Reservoir 2004–2007.

Appendix A  
Reservoir Elevations



Table A1. Ft. Patrick Henry Reservoir elevation data for 2007. TVA Data

Elevation	Month	Day	Elevation	Month	Day	Elevation	Month	Day
1261.82	January	1	1261.33	February	24	1261.33	April	19
1260.29	January	2	1261.21	February	25	1261.51	April	20
1260.00	January	3	1261.28	February	26	1261.33	April	21
1261.61	January	4	1261.22	February	27	1261.19	April	22
1261.23	January	5	1261.27	February	28	1260.95	April	23
1261.58	January	6	1260.88	March	1	1261.04	April	24
1261.71	January	7	1260.70	March	2	1261.37	April	25
1259.70	January	8	1261.12	March	3	1261.41	April	26
1260.70	January	9	1261.19	March	4	1261.28	April	27
1259.81	January	10	1260.98	March	5	1261.33	April	28
1259.10	January	11	1261.16	March	6	1261.14	April	29
1259.41	January	12	1261.02	March	7	1261.12	April	30
1262.00	January	13	1260.50	March	8	1261.11	May	1
1261.86	January	14	1262.05	March	9	1261.25	May	2
1260.22	January	15	1262.00	March	10	1261.06	May	3
1260.64	January	16	1261.09	March	11	1260.66	May	4
1260.54	January	17	1260.99	March	12	1260.97	May	5
1260.05	January	18	1261.62	March	13	1261.11	May	6
1261.04	January	19	1261.17	March	14	1261.34	May	7
1261.27	January	20	1261.53	March	15	1261.33	May	8
1260.78	January	21	1260.99	March	16	1261.25	May	9
1261.21	January	22	1261.13	March	17	1261.65	May	10
1260.70	January	23	1261.22	March	18	1261.92	May	11
1260.07	January	24	1261.30	March	19	1261.91	May	12
1258.83	January	25	1261.29	March	20	1260.43	May	13
1259.80	January	26	1261.29	March	21	1261.13	May	14
1260.59	January	27	1261.16	March	22	1260.88	May	15
1260.85	January	28	1261.51	March	23	1261.23	May	16
1260.58	January	29	1261.64	March	24	1261.12	May	17
1260.46	January	30	1261.40	March	25	1261.12	May	18
1260.83	January	31	1261.34	March	26	1261.43	May	19
1260.57	February	1	1260.62	March	27	1261.04	May	20
1261.27	February	2	1260.84	March	28	1260.78	May	21
1261.20	February	3	1260.78	March	29	1262.02	May	22
1261.21	February	4	1261.13	March	30	1261.82	May	23
1260.14	February	5	1261.19	March	31	1261.80	May	24
1259.81	February	6	1261.40	April	1	1262.17	May	25
1261.07	February	7	1261.37	April	2	1261.70	May	26
1261.07	February	8	1261.11	April	3	1260.76	May	27
1261.74	February	9	1261.25	April	4	1261.50	May	28
1262.29	February	10	1260.82	April	5	1261.90	May	29
1261.34	February	11	1261.18	April	6	1261.55	May	30
1261.09	February	12	1261.10	April	7	1261.86	May	31
1261.14	February	13	1261.26	April	8	1261.24	June	1
1261.09	February	14	1261.04	April	9	1260.35	June	2
1260.92	February	15	1261.38	April	10	1261.31	June	3
1260.93	February	16	1260.98	April	11	1261.02	June	4
1260.98	February	17	1260.50	April	12	1260.55	June	5
1260.96	February	18	1260.92	April	13	1260.82	June	6
1261.21	February	19	1261.65	April	14	1261.23	June	7
1260.93	February	20	1260.55	April	15	1260.85	June	8
1261.01	February	21	1260.96	April	16	1261.27	June	9
1261.16	February	22	1261.13	April	17	1260.69	June	10
1261.24	February	23	1261.23	April	18	1261.02	June	11

Table A1. Continued.

Elevation	Month	Day	Elevation	Month	Day	Elevation	Month	Day
1261.31	June	12	1261.32	August	5	1261.48	September	28
1260.96	June	13	1261.59	August	6	1260.84	September	29
1260.67	June	14	1261.25	August	7	1261.77	September	30
1260.67	June	15	1261.30	August	8	1261.39	October	1
1261.21	June	16	1260.77	August	9	1260.57	October	2
1260.60	June	17	1260.48	August	10	1261.16	October	3
1261.43	June	18	1260.85	August	11	1261.38	October	4
1260.93	June	19	1260.55	August	12	1261.43	October	5
1260.72	June	20	1260.30	August	13	1260.53	October	6
1261.16	June	21	1260.58	August	14	1260.44	October	7
1260.56	June	22	1261.14	August	15	1260.28	October	8
1260.78	June	23	1260.59	August	16	1260.49	October	9
1260.52	June	24	1260.96	August	17	1261.33	October	10
1261.18	June	25	1261.38	August	18	1260.94	October	11
1260.98	June	26	1260.79	August	19	1261.49	October	12
1261.58	June	27	1260.70	August	20	1260.85	October	13
1261.52	June	28	1261.35	August	21	1260.83	October	14
1260.79	June	29	1261.49	August	22	1261.22	October	15
1261.11	June	30	1261.46	August	23	1261.18	October	16
1261.41	July	1	1261.29	August	24	1260.51	October	17
1261.34	July	2	1260.22	August	25	1260.27	October	18
1261.61	July	3	1261.29	August	26	1260.48	October	19
1261.48	July	4	1260.96	August	27	1260.54	October	20
1261.17	July	5	1260.29	August	28	1260.62	October	21
1261.07	July	6	1260.95	August	29	1260.36	October	22
1260.93	July	7	1261.35	August	30	1260.38	October	23
1261.33	July	8	1261.27	August	31	1260.76	October	24
1261.78	July	9	1261.16	September	1	1260.87	October	25
1260.72	July	10	1261.19	September	2	1260.87	October	26
1261.68	July	11	1260.89	September	3	1260.94	October	27
1261.84	July	12	1260.58	September	4	1260.80	October	28
1260.42	July	13	1261.16	September	5	1261.30	October	29
1261.65	July	14	1261.40	September	6	1261.65	October	30
1262.08	July	15	1261.04	September	7	1261.12	October	31
1261.70	July	16	1260.98	September	8	1261.36	November	1
1261.61	July	17	1261.42	September	9	1261.51	November	2
1261.70	July	18	1261.51	September	10	1261.18	November	3
1261.81	July	19	1261.13	September	11	1260.85	November	4
1261.27	July	20	1258.87	September	12	1260.45	November	5
1261.11	July	21	1260.84	September	13	1260.95	November	6
1260.43	July	22	1260.93	September	14	1260.36	November	7
1260.92	July	23	1260.98	September	15	1260.75	November	8
1260.87	July	24	1261.33	September	16	1260.85	November	9
1261.17	July	25	1261.90	September	17	1260.56	November	10
1261.72	July	26	1261.38	September	18	1261.40	November	11
1261.17	July	27	1260.55	September	19	1261.52	November	12
1260.88	July	28	1260.28	September	20	1260.31	November	13
1260.71	July	29	1260.41	September	21	1260.75	November	14
1260.86	July	30	1260.51	September	22	1260.80	November	15
1261.13	July	31	1261.19	September	23	1260.70	November	16
1260.60	August	1	1261.38	September	24	1260.17	November	17
1260.54	August	2	1260.93	September	25	1259.59	November	18
1259.83	August	3	1260.76	September	26	1260.93	November	19
1261.58	August	4	1261.96	September	27	1261.62	November	20

Table A1. Continued.

<b>Elevation</b>	<b>Month</b>	<b>Day</b>
1261.26	November	21
1261.26	November	22
1261.49	November	23
1261.25	November	24
1261.19	November	25
1261.12	November	26
1261.49	November	27
1260.76	November	28
1261.18	November	29
1260.39	November	30
1260.81	December	1
1260.83	December	2
1260.96	December	3
1260.44	December	4
1260.85	December	5
1260.81	December	6
1260.70	December	7
1260.96	December	8
1260.98	December	9
1261.16	December	10
1260.51	December	11
1261.02	December	12
1261.17	December	13
1260.97	December	14
1260.76	December	15
1261.11	December	16
1261.41	December	17
1261.00	December	18
1261.14	December	19
1260.79	December	20
1260.57	December	21
1259.93	December	22
1260.30	December	23
1260.75	December	24
1260.22	December	25
1260.38	December	26
1260.73	December	27
1260.90	December	28
1261.10	December	29
1260.96	December	30
1261.25	December	31

Figure A1. Ft. Patrick Henry Reservoir daily reservoir elevations for 2007 (TVA data).

